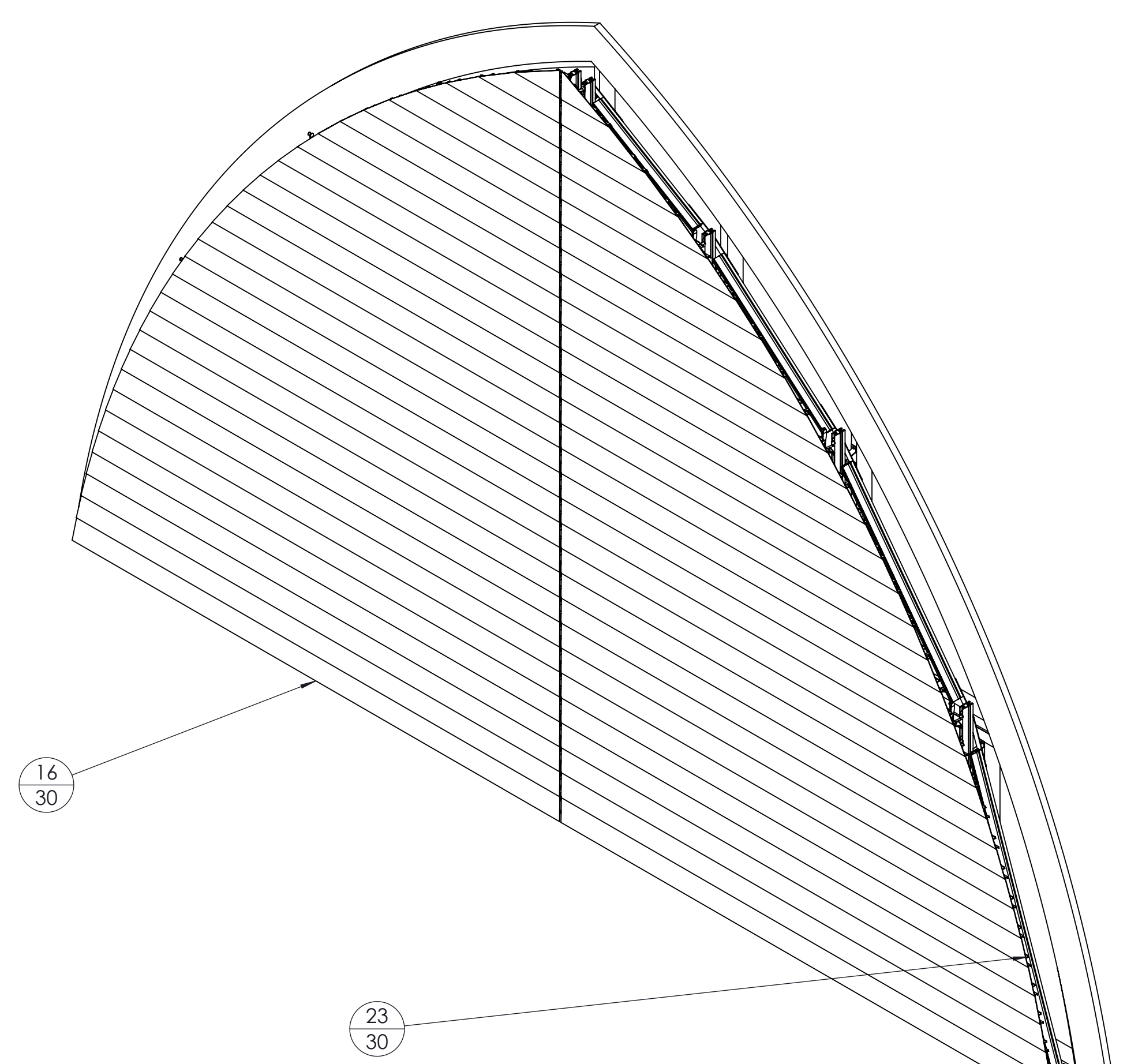
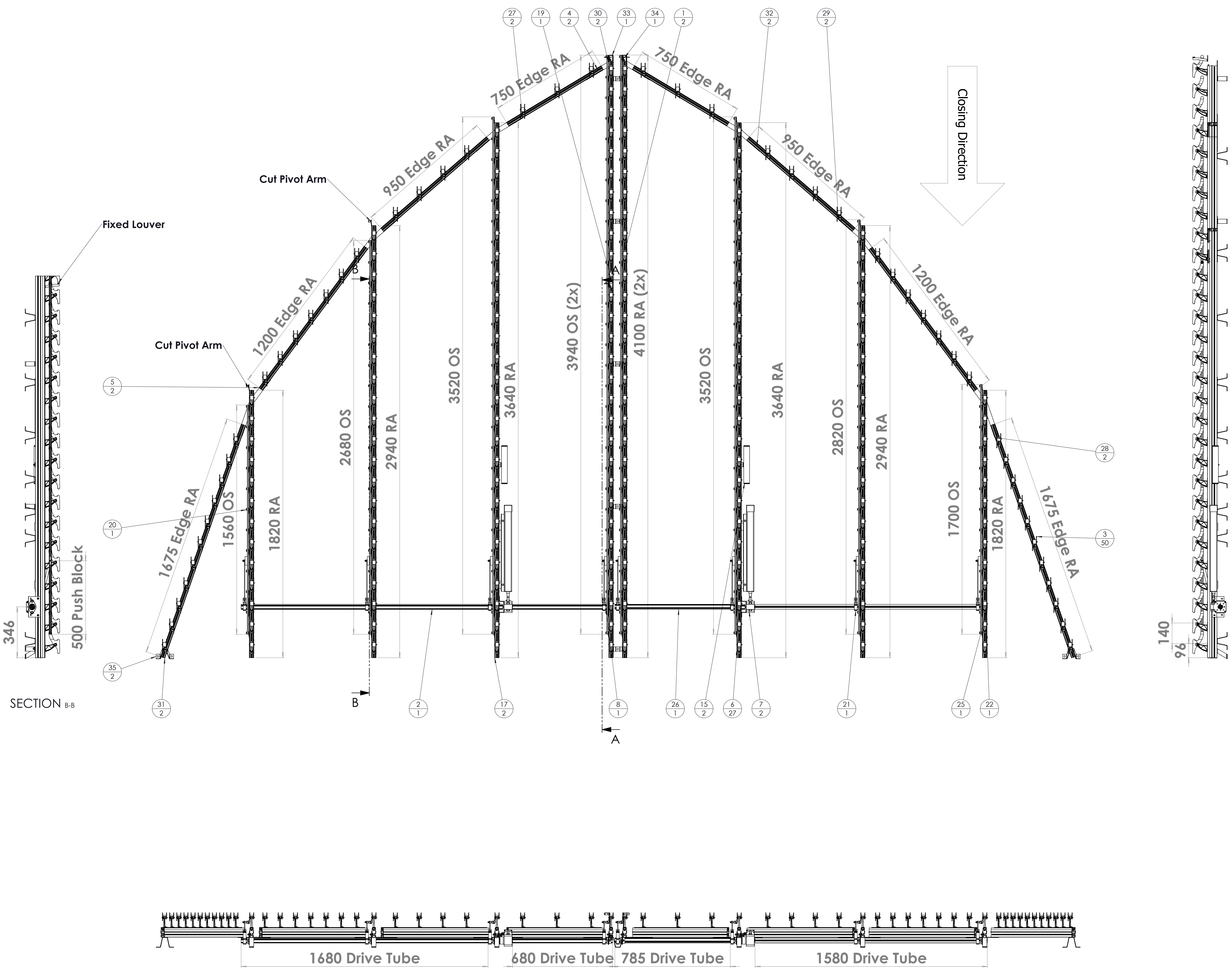


FASTENERS FOR INSTALLATION EXCLUDED (third party)				FASTENERS FOR SYSTEM ASSEMBLY INCLUDED			
MATERIAL							
CUSTOMER	DATE	16-10-2020	RACK ARMS & PARTS	RAL 7021 30% SD			
DESCRIPTION	SCALE	1:15	LOUVERS	RAL 7021 30% SD			
PROJECT NR	ENGINEER	JM	PLASTIC PARTS	Black			
200834	QTY	1	STATE	Approved	150E	Ext	200834-01-000
200834	REV	01					

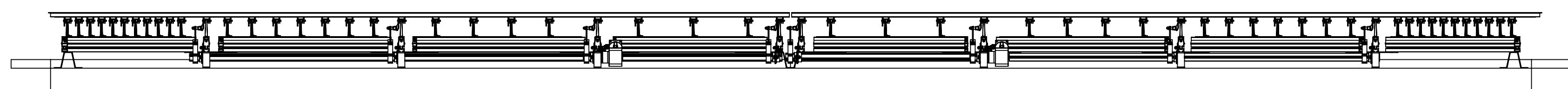
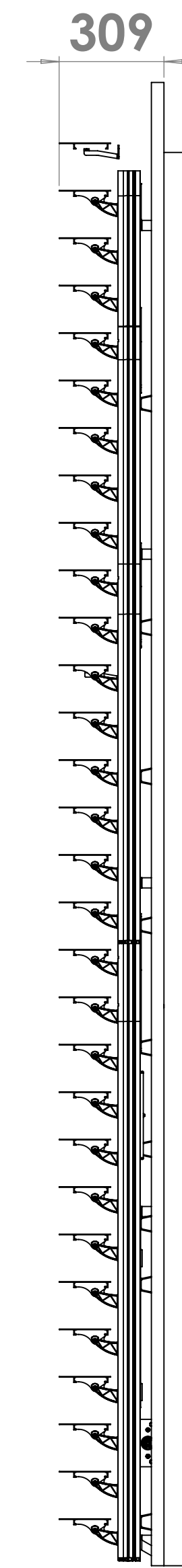
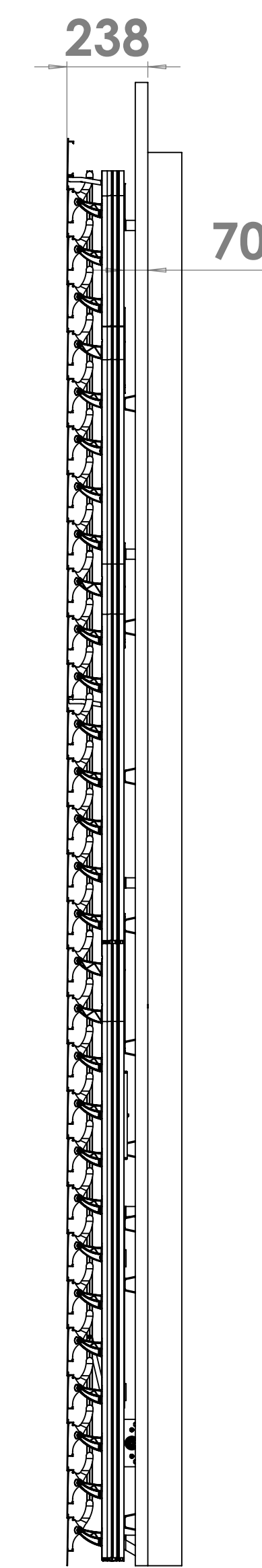
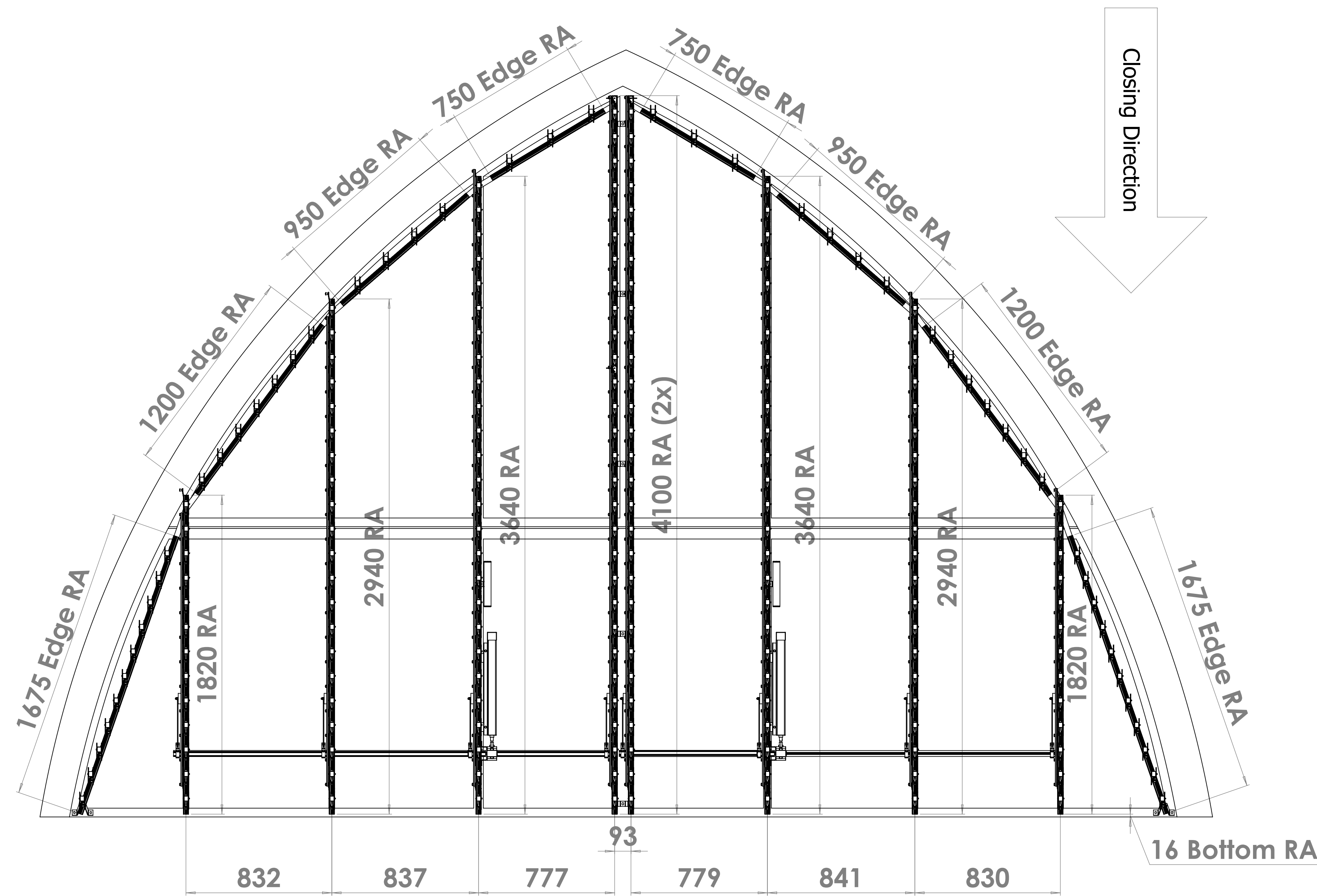
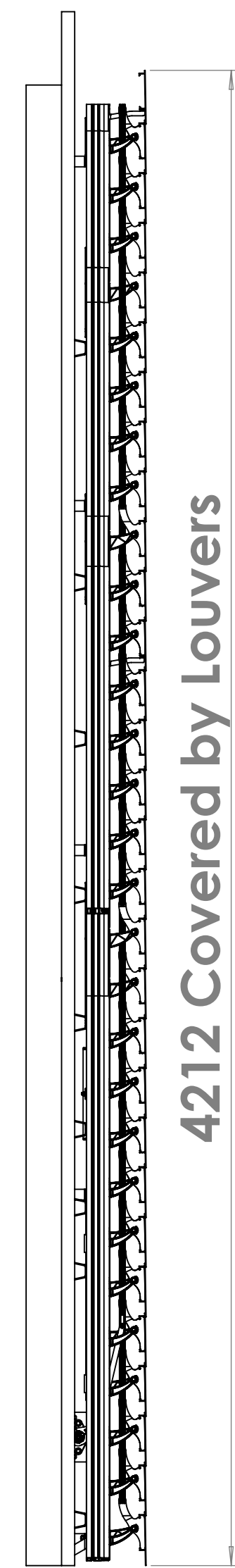
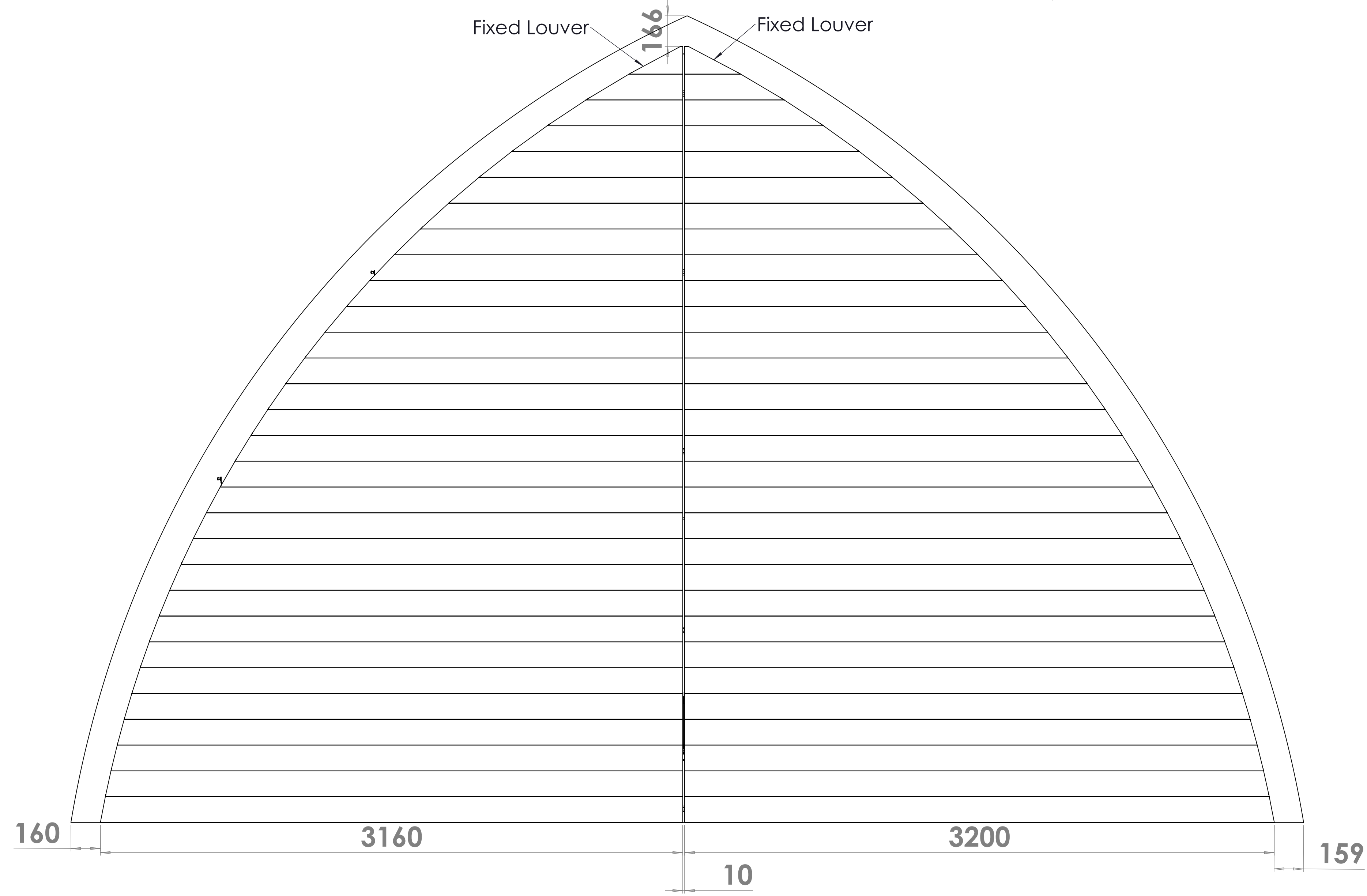




ITEM NO.	QTY.	SW-File Name (File Name)	DESCRIPTION	Comment 2
1	2	200834-01-100	Rack Arm 65 mm L-System, Pitch 140 mm (96)	L=4060 (96)
2	1	200834-01-501	Drive tube 35 mm	L=1680
3	50	45 361	Turnable pivot (Kit), L-System (incl. Statclip & screw)	
4	2	200834-01-202	Heavy Duty Edge Rack arm 65 mm	L=750
5	2	200834-01-203	Heavy Duty Edge Rack arm 65 mm	L=1200
6	27	14 620	Omega H-70-L, 28x68x31x68x28 x 3 mm, lg=30mm	L=30
7	2	45 813 22	Motor Kit 13:1 IO/RTS	
8	1	200834-01-502	Drive tube 35 mm	L=680
9	*70*	908	DIN 125-1A Plain Washer M8	
10	*70*	910	DIN 934 Hexagon Nut M8	
11	*70*	911	DIN 6798-A Lock washer M8	
12	*70*	Hamerkopbol-M8x20	Hamerhead bolt M8 x 20	
13	2	28 143	Somfy SUNEA SCR 40 IO, 13/10/230V, 5m white cable	
14	2	28 965	Hirschmann Set STAK/STAS-2 (Stak/Stas/clamp)	
15	2	58 988	Stak/Stas Protecting Kit (incl. Tube, Plugs & Bracket) (lg=250mm)	
16	30	200834-01-402	Louver 150E	L= See DWG
17	2	200834-01-100	Rack Arm 65 mm L-System, Pitch 140 mm (96)	L=3640 (96)
18	1	200834-01-100	Rack Arm 65 mm L-System, Pitch 140 mm (96)	L=2940 (96)
19	1	New Bracket Fixed Louver 155E	Bracket Fixed Louver	T=3
20	1	200834-01-100	Rack Arm 65 mm L-System, Pitch 140 mm (96)	L=1820 (96)
21	1	200834-01-100	Rack Arm 65 mm L-System, Pitch 140 mm (96)	L=2940 (96)
22	1	200834-01-100	Rack Arm 65 mm L-System, Pitch 140 mm (96)	L=1820 (96)
23	30	200834-01-403	Louver 150E	L= See DWG
24	1	28 161	Somfy Situo 1 IO Pure Transmitter, White	
25	1	200834-01-503	Drive tube 35 mm	L=1580
26	1	200834-01-504	Drive tube 35 mm	L=785
27	2	200834-01-301	Top Bracket	L=
28	2	200834-01-303	Top Bracket	L=
29	2	200834-01-302	Top Bracket	L=
30	2	14 603	Edge Rack Arm Connect-strip 3 holes for M8 (L/R)	
31	2	200834-01-204	Heavy Duty Edge Rack arm 65 mm	L=1675
32	2	200834-01-205	Heavy Duty Edge Rack arm 65 mm	L=950
33	1	14 972	Bracket Fixed Louver	T=3
34	1	14 986	Bracket Fixed Louver	T=3
35	2	Omega-70-60°	Omega H=70; Angle 60°	L=150 ⁰¹

FASTENERS FOR INSTALLATION EXCLUDED (Inrd party)				FASTENERS FOR SYSTEM ASSEMBLY INCLUDED			
CUSTOMER	DATE	SCALE	1:10	RACK ARMS & PARTS	RAL 7021 30% SD	LOUVERS	RAL 7021 30% SD
DESCRIPTION	PROJECT NR	ENGINEER	JM	PLASTIC PARTS	Black		
200834	200834	QTY	1	200834-01-000	24	AO	
200834-01-000	200834-01-000	REV	01				





FASTENERS FOR INSTALLATION EXCLUDED (third party)				FASTENERS FOR SYSTEM ASSEMBLY INCLUDED			
MATERIAL				RACK ARMS & PARTS	RAL 7021 30% SD		
CUSTOMER		DATE	16-10-2020	LOUVERS	RAL 7021 30% SD		
DESCRIPTION		SCALE	1:15	PLASTIC PARTS	Black		
PROJECT NR	200834	ENGINEER	JM				
ISSUED BY	200834	QTY	1				
DATE	16-10-2020	STATE	Approved				
REVISION	01	REV	01				
<small> This drawing is the property of Sunshield Unique Louvers. It is to be used only for the project and site mentioned herein and not for any other project or site without the written consent of Sunshield Unique Louvers. </small>				<small> SUNSHIELD UNIQUE LOUVERS </small>			

