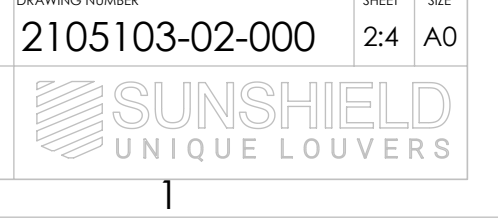
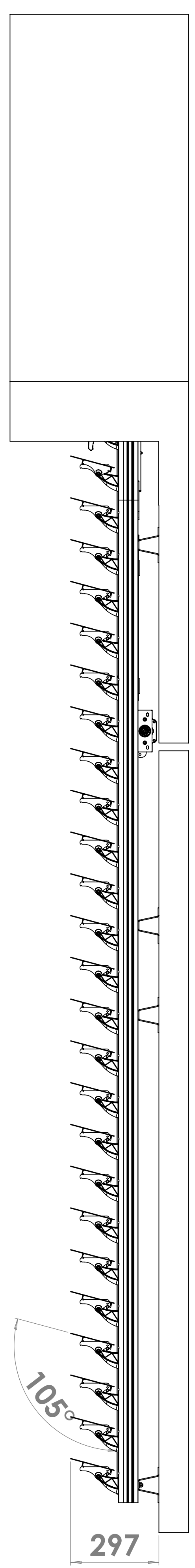
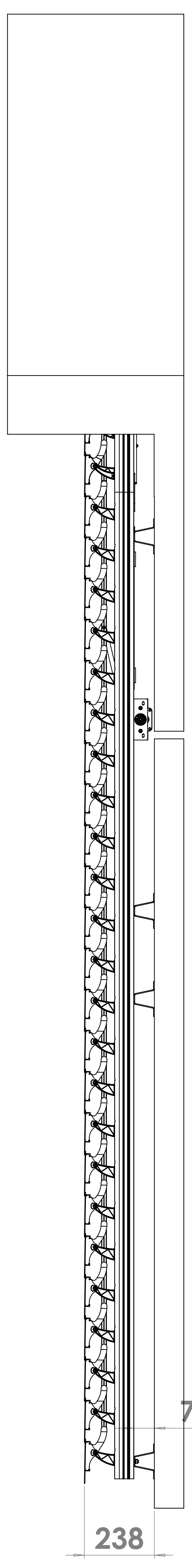
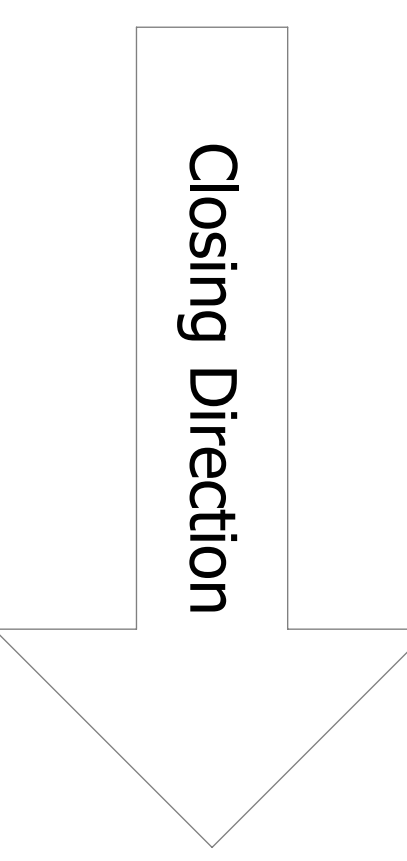
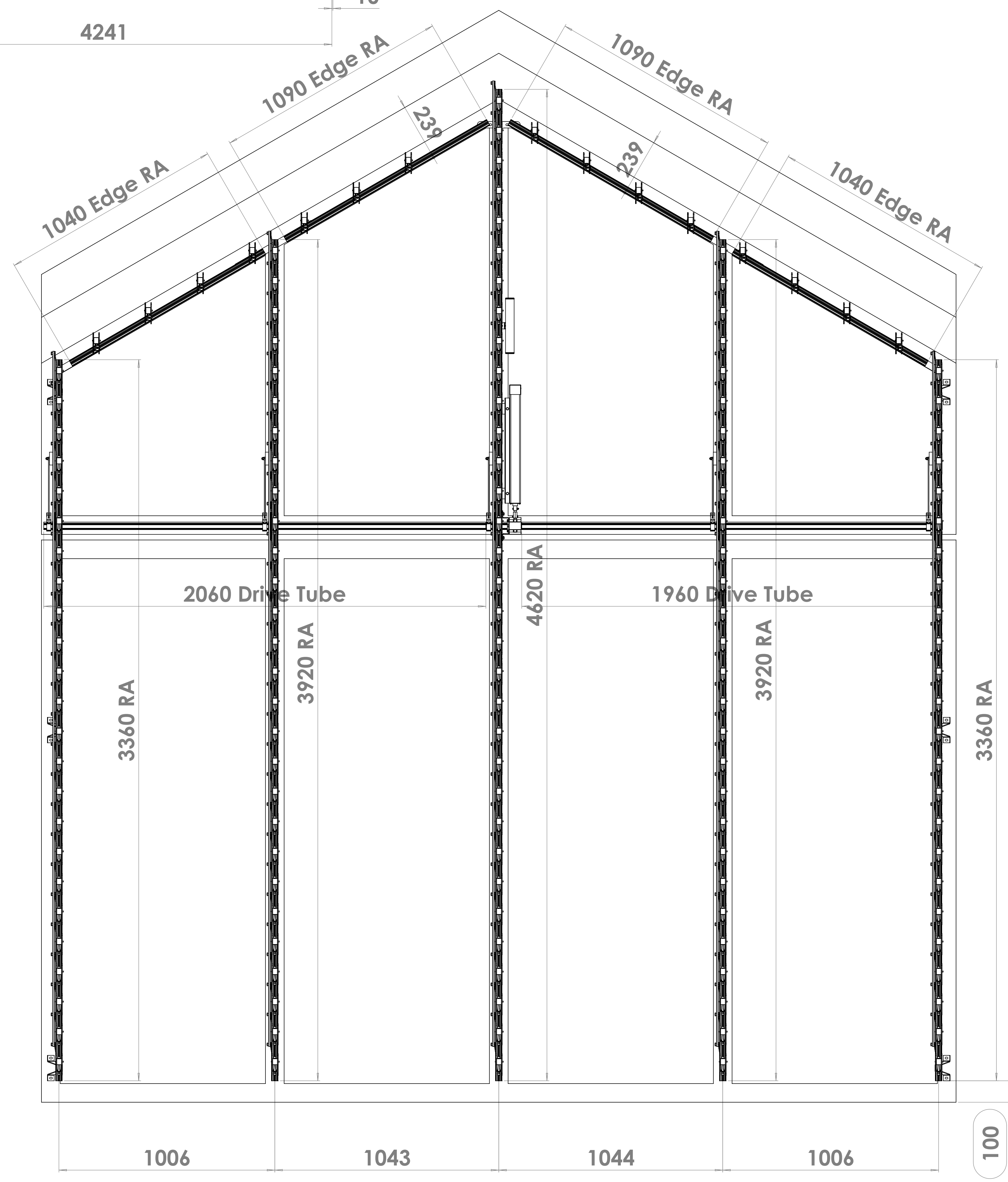
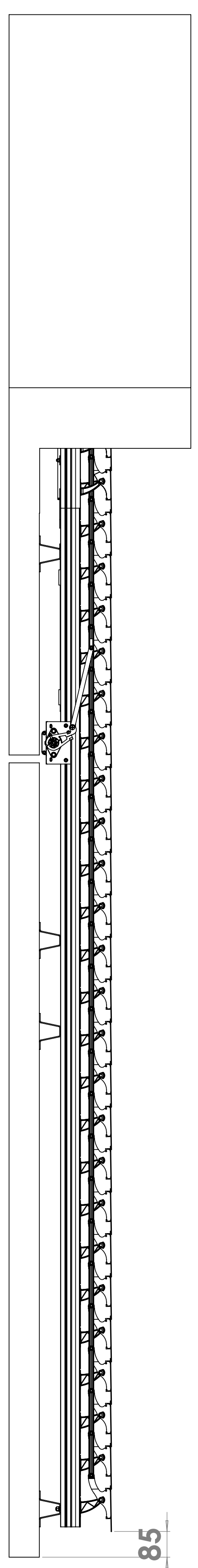
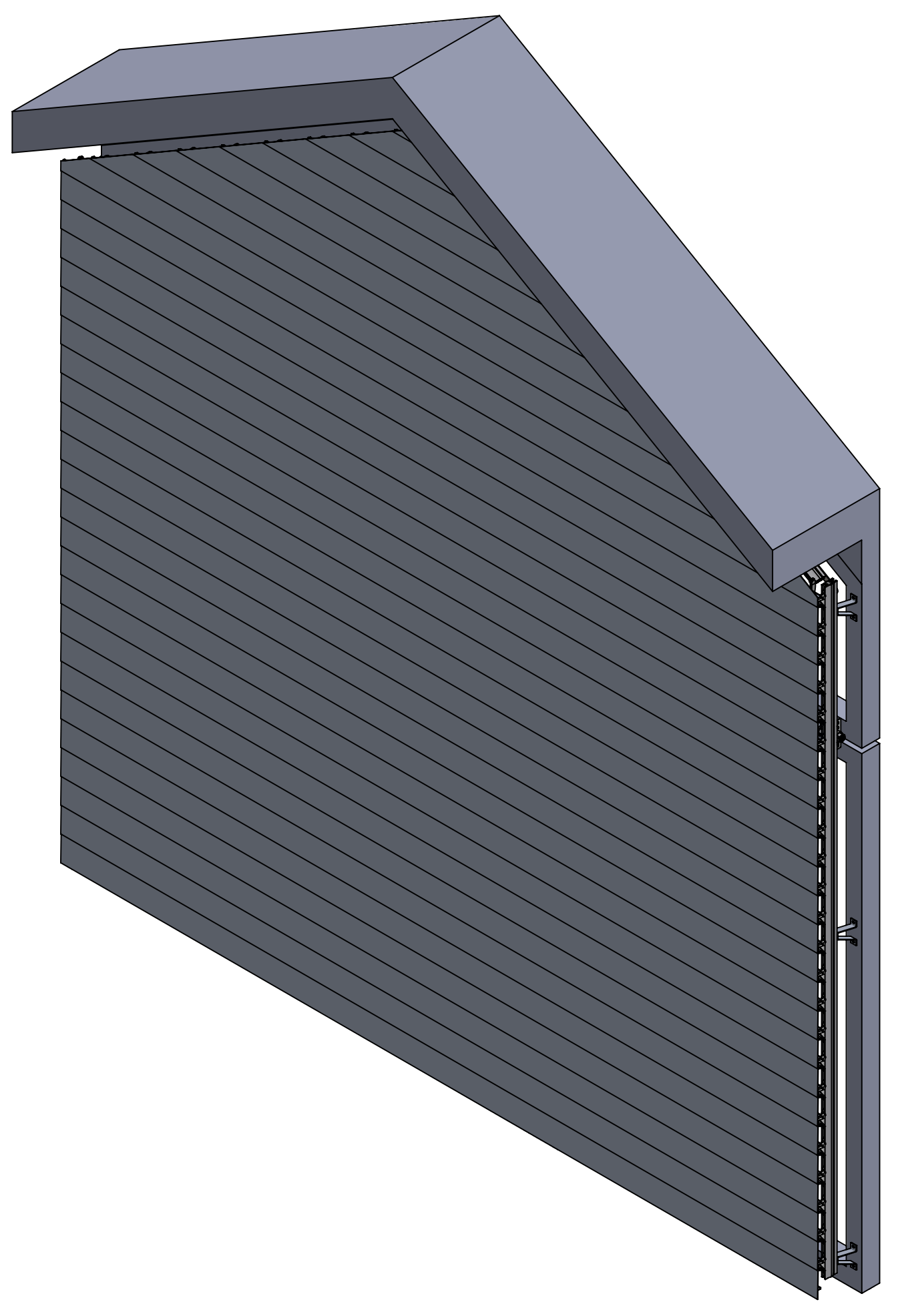
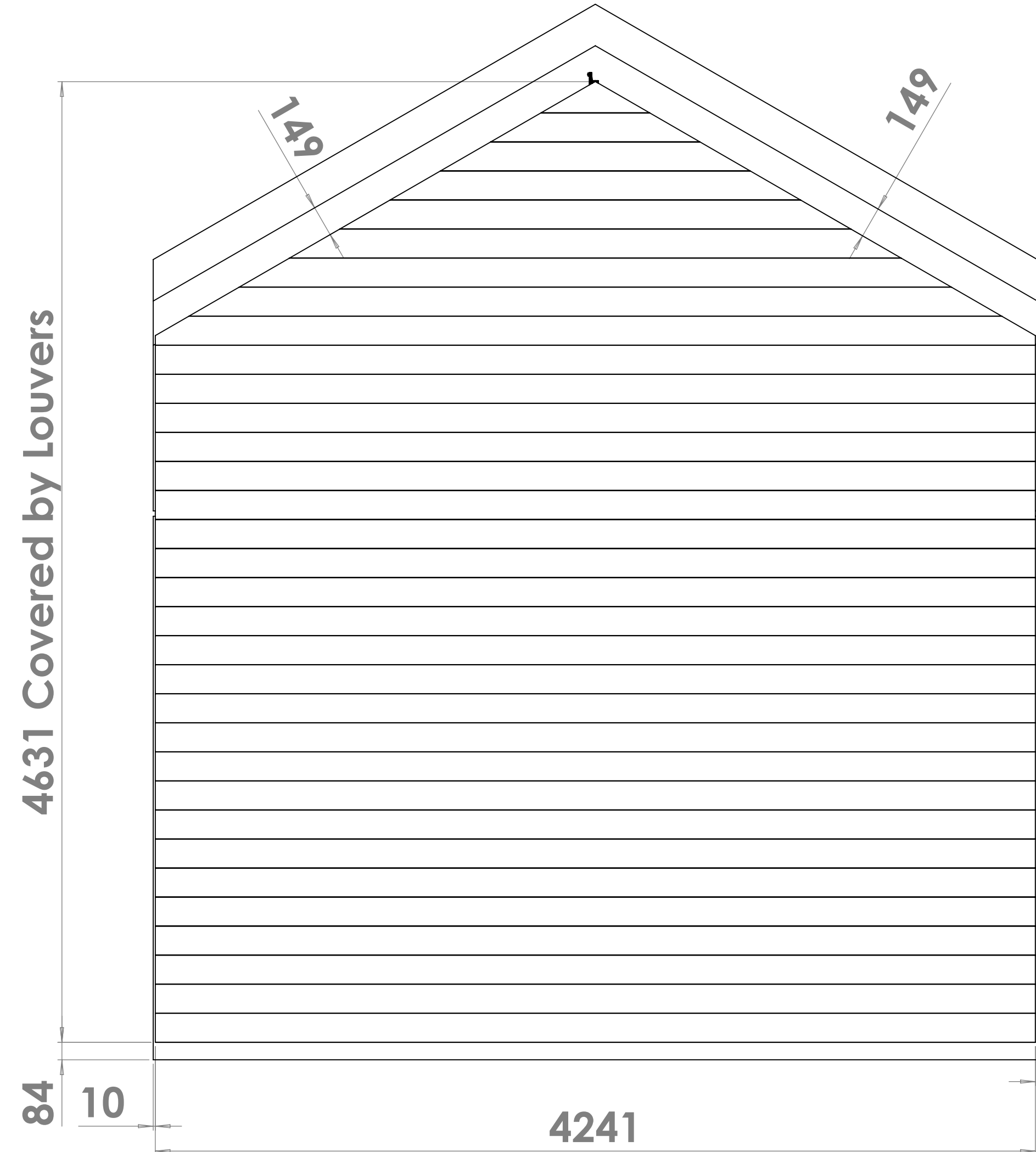


Afstellen op 105° open

ITEM NO.	QTY.	SW-File Name(File Name)	DESCRIPTION	Comment 2
1	2	2105103-02-100	Rack Arm 65 mm L-System, Pitch 140 mm (96)	L=3920 (96)
2	1	2105103-02-501	Drive tube 35 mm	L=2060
3	15	45 361	Turnable pivot (kit), L-System (incl. Statclip & screw)	
4	2	2105103-02-202	Heavy Duty Edge Rack arm 65 mm	L=1040
5	1	45 813 11	Motor Kit 13:1 Hardwired	
6	1	2105103-02-502	Drive tube 35 mm	L=1960
7	*36*	908	DIN 125-1A Plain Washer M8	
8	*36*	910	DIN 934 Hexagon Nut M8	
9	*36*	911	DIN 6798-A Lock washer M8	
10	*36*	934 08 20	Hammer Head Bolt M8x20 (Type 28/15)	
11	1	58 988	Stak/Stas Protecting Kit (incl. Tube, Plugs & Bracket) (lg=250mm)	
12	33	2105103-02-402	Louver 150E	L= See DWG
13	2	2105103-02-100	Rack Arm 65 mm L-System, Pitch 140 mm (96)	L=3360 (96)
14	1	2105103-02-100	Rack Arm 65 mm L-System, Pitch 140 mm (96)	L=4620 (96)
15	2	14 403	Edge Rack Arm Connect-strip 3 holes for M8 (L/R)	
16	2	2105103-02-205	Heavy Duty Edge Rack arm 65 mm	L=1090
17	6	Omega-70-60°	Omega H=70; Angle 60°	L=150
18	2	14 725	Edge Rack Arm Connect-strip 5 holes for M8 (Center)	
19	10	14 620	Omega H-70-L, 28x68x31x68x28 x 3 mm, lg=30mm	L=30
20	1	Cross Bracket L-System	Edge RA Cross Bracket	
21	1	28 102	Somfy LS40 VULCAN Motor 13/10/230V, 3m white cable	
22	1	28 933	Hirschmann Set STAK/STAS-3 (Stak/Stas/clamp)	01

FASTENERS FOR INSTALLATION EXCLUDED (Inrd party)				FASTENERS FOR SYSTEM ASSEMBLY INCLUDED			
CUSTOMER	DATE	SCALE	13-7-2021	RACK ARMS & PARTS	SCALE	1:10	RAL 7021 F.Sfr SD
DESCRIPTION	PROJECT NR	ENGINEER	SD	LOUVERS	PLASTIC PARTS	PLASTIC PARTS	RAL 7021 F.Sfr SD
2105103	2	Approved	01	150E	Ext	2105103-02-000	24 A0
24	01	Approved	01	150E	Ext	2105103-02-000	24 A0





FASTENERS FOR INSTALLATION EXCLUDED (third party)				FASTENERS FOR SYSTEM ASSEMBLY INCLUDED			
MATERIAL							
CUSTOMER		DATE	13-7-2021	RACK ARMS & PARTS		RAL 7021 F.Sfr SD	
DESCRIPTION		SCALE	1:10	LOUVERS		RAL 7021 F.Sfr SD	
PROJECT NR	2105103	ENGINEER	SD	PLASTIC PARTS		Black	
Customer's Ref	NL 4941 V1	QTY	2	150E	Ext	2105103-02-000	3/4 A0
Approved by		STATE	Approved				
Rev	01	REV	01				



