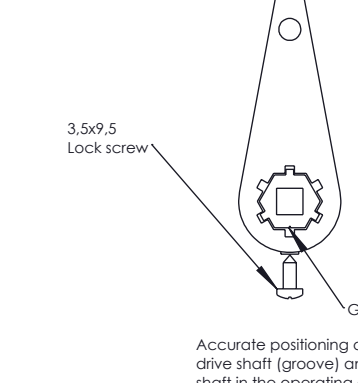


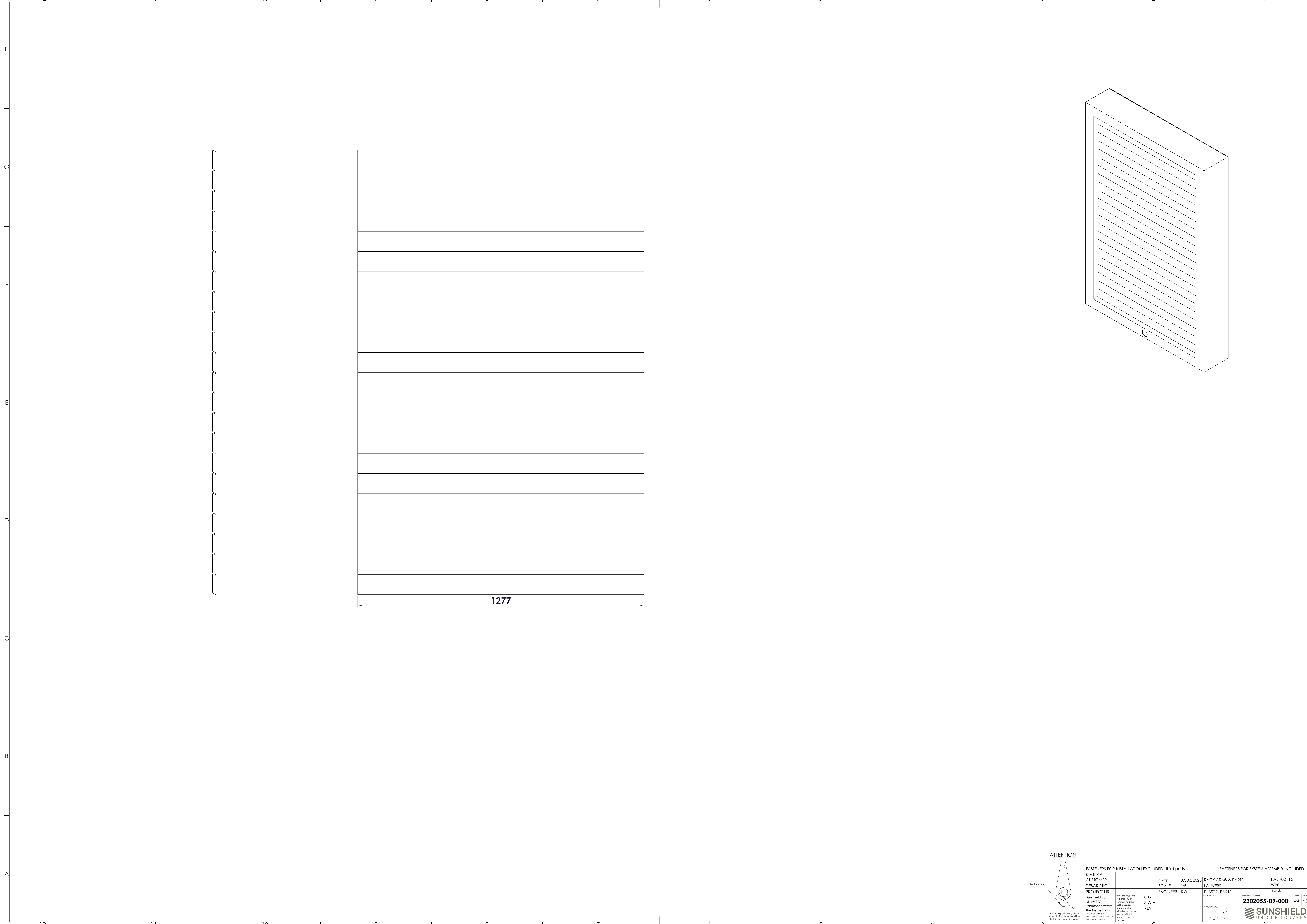
ITEM NO.	QTY.	SW-File Name (File Name)	DESCRIPTION	Comment 2
1	2	2302055-09-100	Standard Rack Arm, 35 mm, Pitch 90 (10) Assembled	L= 1980; Pitch 90 (10)
2	1	2302055-09-501	Drive Shaft 14/7 mm; Standard	L=1159
3	1	28 143	Somfy SUNEА SCR 40 IO, 13/10/230V, 5m white cable	
4	1	28 151	Somfy Teils 1 Pure RTS Transmitter, White	
5	1	28 965	Hirschmann Set STAK/STAS-2 (Stak/Stas/clamp)	
6	4	58 715	Angle Bracket 50x30x20x3 M6 Slot	L=20
7	1	58 957 99 22	Exterior Motor kit for 7:1 IO/RTS (incl. Motorhood L=580)	L=580 (Motorhood)
8	1	58 988	Stak/Stas Protecting Kit (incl. Tube, Plugs & Bracket) (g=255mm)	
9	22	2302055-09-401	87W Louver	L=1277

ATTENTION

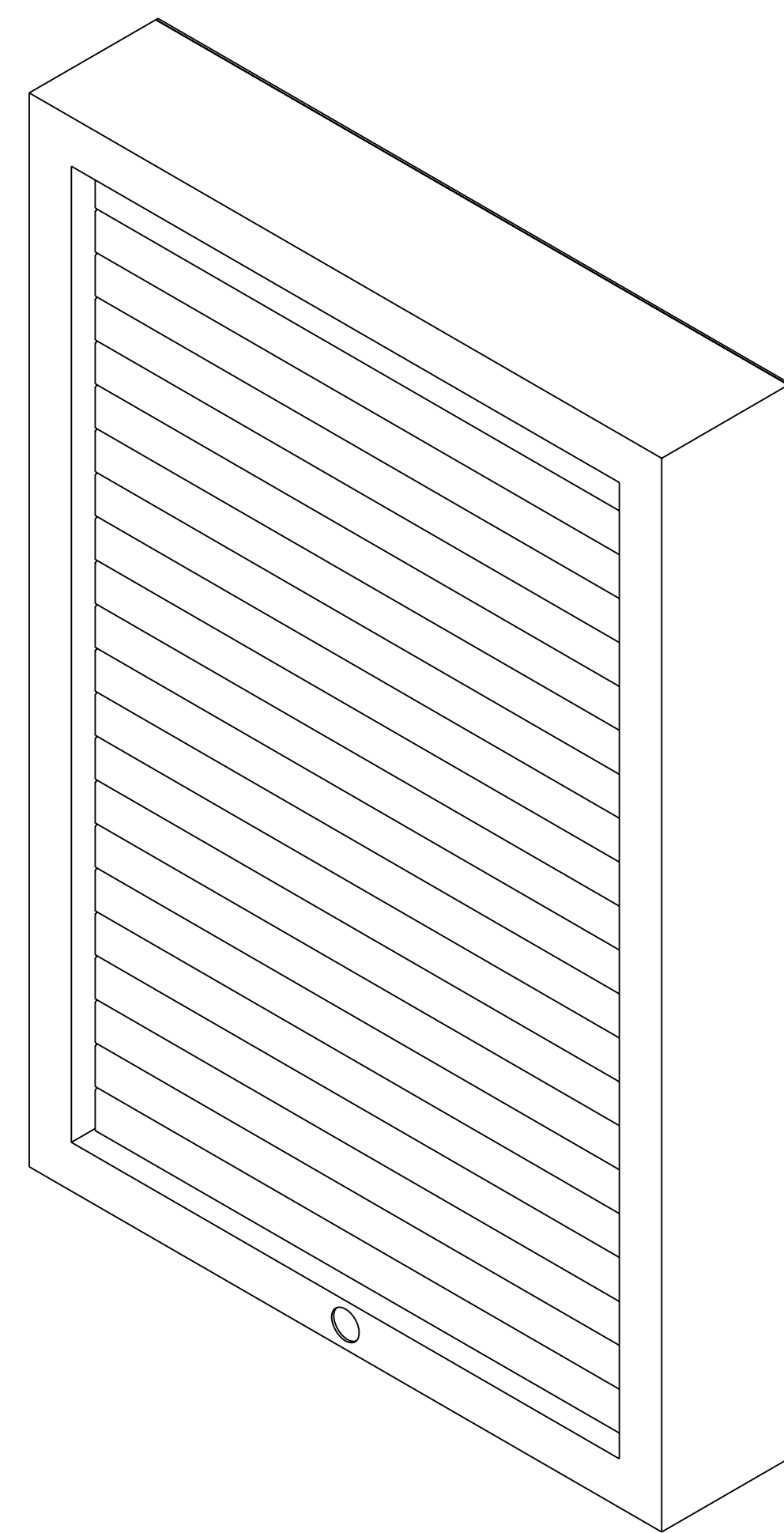


FASTENERS FOR INSTALLATION EXCLUDED (third party)				FASTENERS FOR SYSTEM ASSEMBLY INCLUDED			
CUSTOMER	DATE	09/03/2023	RACK ARMS & PARTS	RAL 7021 FS			
DESCRIPTION	SCALE	1:5	LOUVERS	WRC			
PROJECT NR	ENGINEER	RW	PLASTIC PARTS	BLACK			
2302055-09-000	QTY	STATE	2302055-09-000	24	A0		
REVISIONS	REV						

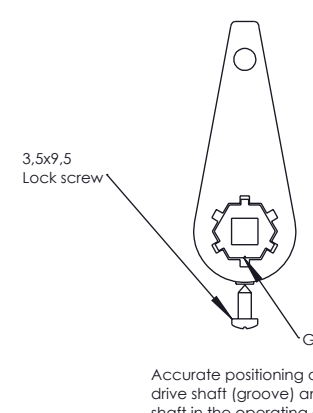




1277



ATTENTION



FASTENERS FOR INSTALLATION EXCLUDED (third party)				FASTENERS FOR SYSTEM ASSEMBLY INCLUDED			
MATERIAL							
CUSTOMER		DATE	09/03/2023	RACK ARMS & PARTS		RAL 7021 FS	
DESCRIPTION		SCALE	1:5	LOUVERS		WRC	
PROJECT NR		ENGINEER	RW	PLASTIC PARTS		BIGCK	
OPERATED BY		QTY		PLASTIC PARTS		2302055-09-000	
HL 4941 V1		STATE		PLASTIC PARTS		4x4 A0	
REVISIONS		REV		PLASTIC PARTS		SUNSHIELD	
				PLASTIC PARTS		UNIQUE LOUVERS	