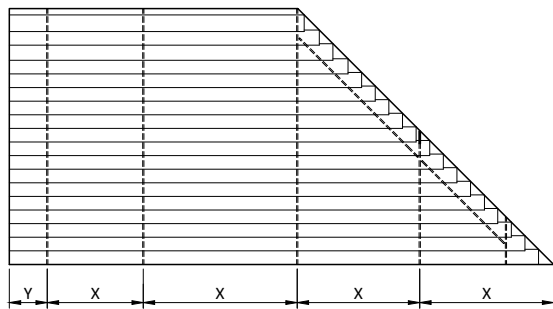
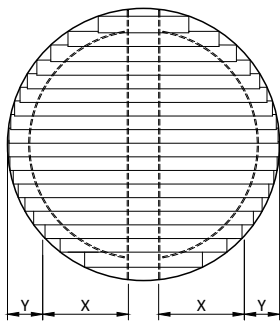
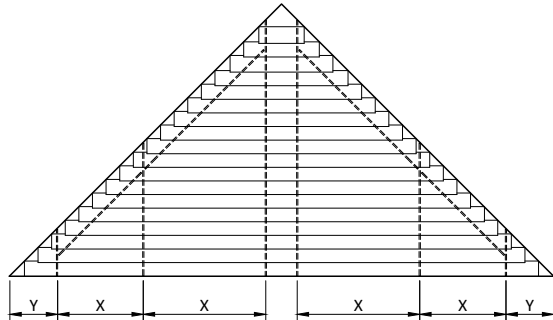
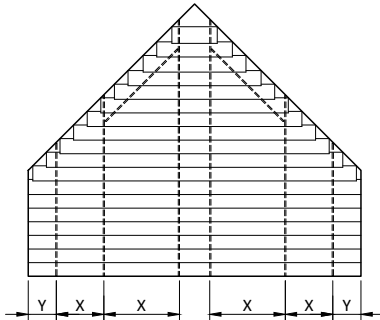
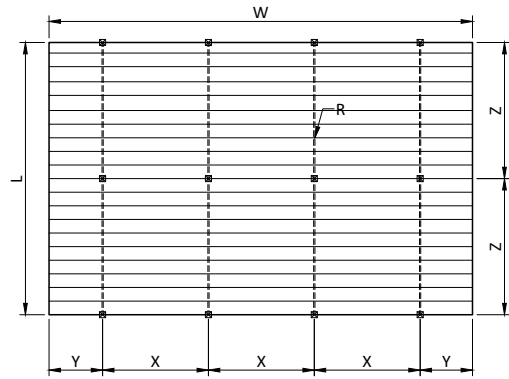





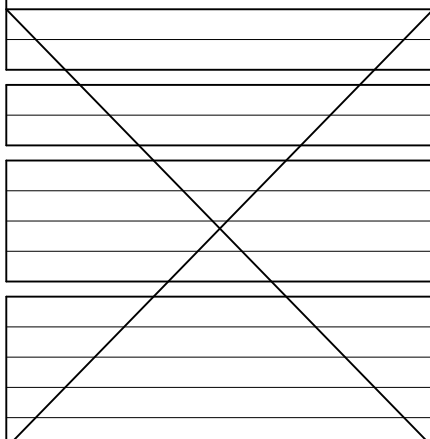
50mm aluminium slat



Sunshield 50mm aluminium slat

	
width	W
length / drop / height	L
rack arm distance	X
slat side overhang	Y
support distance	Z
standard rack arm	35 mm
heavy duty rack arm	80 mm
box rack arm	100 mm
number of rack arms	R

INTERNAL
max*. 25 m ²
max. 90 cm
max. 40 cm
max. 225 cm
max. 350 cm
max. 450 cm
minimum # rack arms
-170 cm = 2 pcs
171-260 cm = 3 pcs
261-350 cm = 4 pcs
351-440 cm = 5 pcs

EXTERNAL


Larger systems than max* can be calculated and designed by Sunshield.