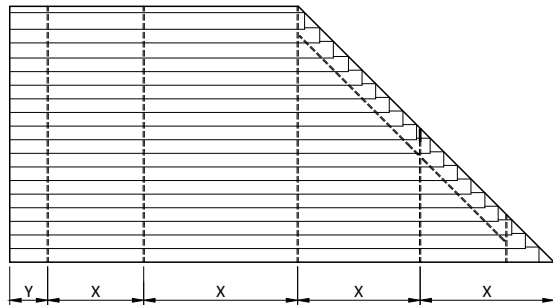
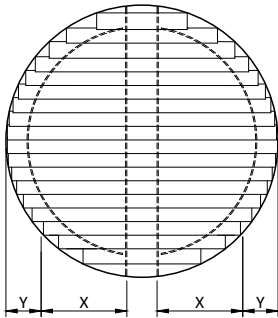
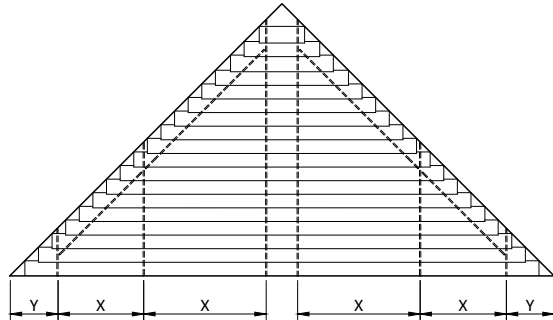
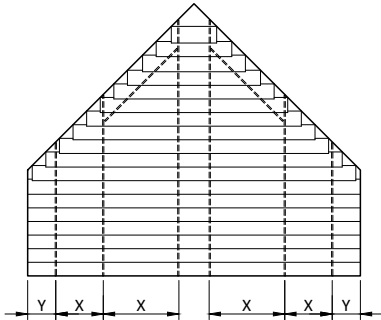
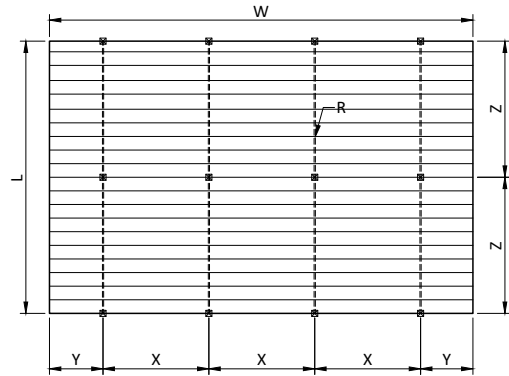


75mm extruded louvers



Sunshield 75mm aluminium louver

| | |
|------------------------|--------|
| | |
| width | W |
| length / drop / height | L |
| rack arm distance | X |
| slat side overhang | Y |
| support distance | Z |
| standard rack arm | 35 mm |
| heavy duty rack arm | 80 mm |
| box rack arm | 100 mm |
| number of rack arms | R |

| |
|-----------------------|
| INTERNAL |
| max. 20m ² |
| max. 140 cm |
| max. 40 cm |
| max. 180 cm |
| max. 300 cm |
| max. 420 cm |
| minimum # rack arms |
| -220 cm = 2 pcs |
| 221-360 cm = 3 pcs |
| 361-500 cm = 4 pcs |
| 501-600 cm = 5 pcs |

| |
|-----------------------|
| EXTERNAL |
| max. 18m ² |
| max. 130 cm |
| max. 30 cm |
| max. 120 cm |
| max. 240 cm |
| max. 350 cm |
| minimum # rack arms |
| -190 cm = 2 pcs |
| 191-320 cm = 3 pcs |
| 321-450 cm = 4 pcs |
| 451-580 cm = 5 pcs |

Larger systems than max* can be calculated and designed by Sunshield.